

# 一、 Initial Configuration Instructions

## 1. Configuration information

Working mode	AP mode
Network name	JMYWIFI_XXXXXXXXXXXX
Network password	Password: 0123456789, security mode WPA2-PSK (TKIP)
IP address	192.168.1.2
Subnet mask	255.255.255.0
Gateway address	192.168.1.1
DNS address	192.168.1.1
port number	1000

Note: xx in JMYWIFI\_XXXXXXXXXXXX is the MAC address of the network card.

## 2. Restore original settings

Short circuit J4 for >4s, after the buzzer sounds, the WIFI interface configuration will be reset, and the reset parameters are detailed in the table above.

# 二、 online configuration

## 1. Reader restore factory settings

For detailed operation, please refer to Chapter 1, Section 2.

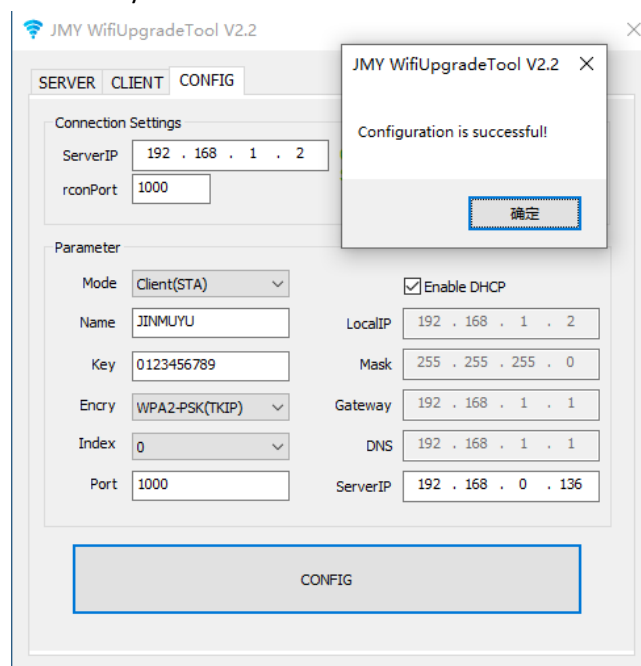
## 2. Connect to wireless network

After the computer (laptop/ (desktop + wireless network card)) connects to the wireless network JMYWIFI\_XXXXXXXXXXXX, enter ServerIP and rconPort, and click the Connect button.



### 3. Parameter settings

Example configuration parameters: set JMY6025 as Client (STA); the name of the network to be connected is "JINMUJU"; the password is "0123456789"; enable DHCP to dynamically assign IP addresses; the server address is "192.168.0.136"; the port number is "1000". Click the one-key configuration button, as shown in the figure. After the configuration is successful, JMY6025 will execute the setting immediately.



Note 1: The connected network name and password must be correct.

Note 2: When testing, if you do not know the IP address of the machine, you can use the ipconfig command in the command prompt to obtain the IP address of the machine, as shown in the figure below.

```
命令提示符
C:\Users\Administrator>ipconfig
Windows IP 配置

无线局域网适配器 本地连接* 1:

   媒体状态 . . . . . : 媒体已断开连接
   连接特定的 DNS 后缀 . . . . . :

无线局域网适配器 本地连接* 2:

   媒体状态 . . . . . : 媒体已断开连接
   连接特定的 DNS 后缀 . . . . . :

以太网适配器 以太网:

   连接特定的 DNS 后缀 . . . . . :
   本地连接 IPv6 地址. . . . . : fe80::e5e8:dfc1:d3bb:99f2%10
   IPv4 地址 . . . . . : 192.168.0.136
   子网掩码 . . . . . : 255.255.254.0
   默认网关 . . . . . : 192.168.0.1

无线局域网适配器 WLAN:

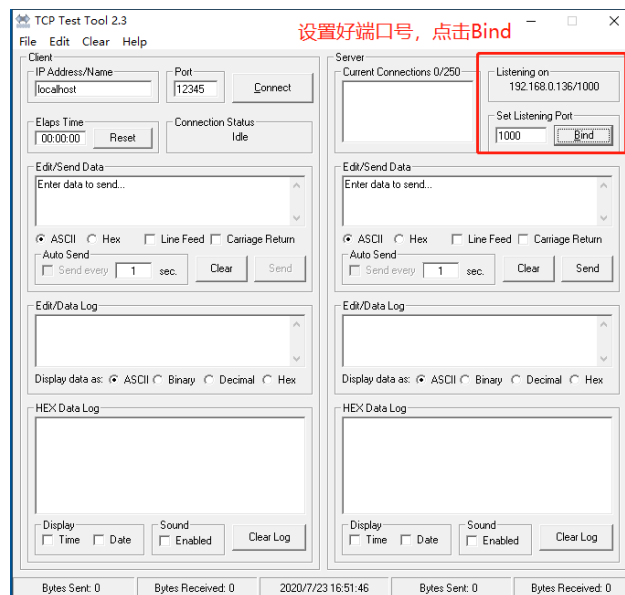
   媒体状态 . . . . . : 媒体已断开连接
   连接特定的 DNS 后缀 . . . . . :

C:\Users\Administrator>
```

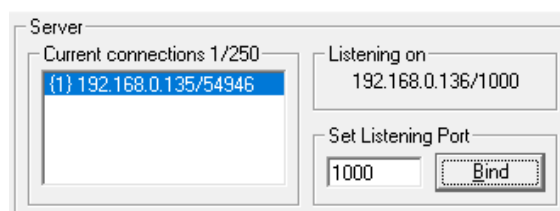
## 4. Verify configuration

Open TCP Test Tool 2.3, in the Server window, set the port number, and click the Bind button.

**Note:** The port number should be consistent with the configured port number.



After the connection is successful, the connected client ip address and port number are displayed in the Current connections window.



Send the test command "0004001014" to read the product information, as shown in the figure below. If correct data is returned, the configuration is successful.

